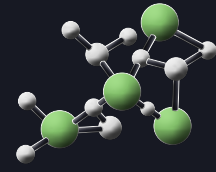


BRUCHA panel WP

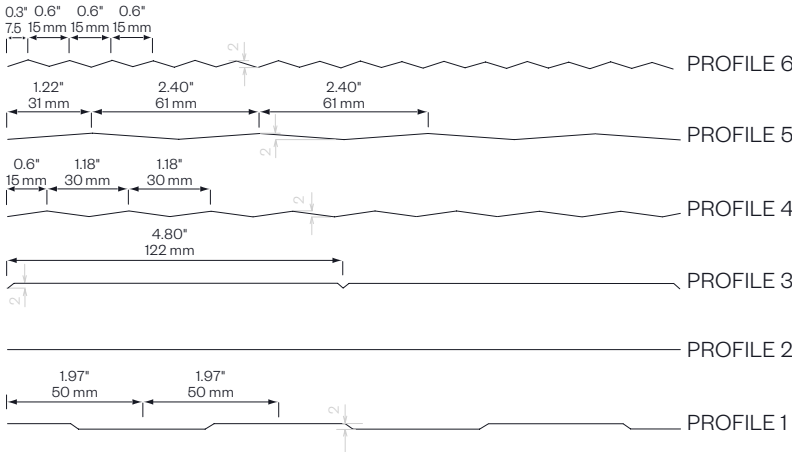
wall exposed fastener

PIR+
nonhalogen

iQTec
foam technology®



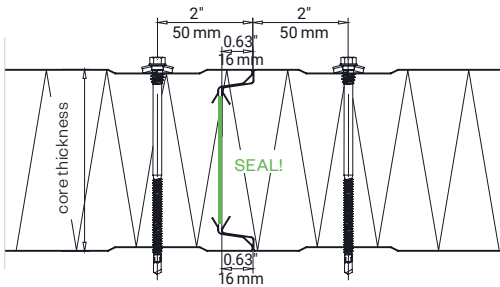
exterior PROFILE options - close-up



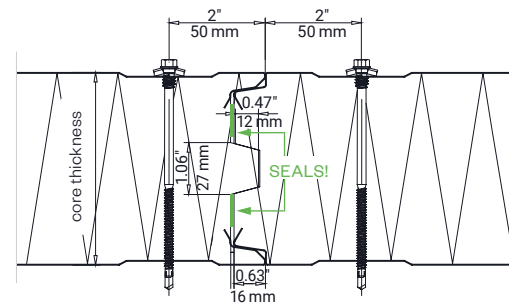
symbol image - WP profile 1



DETAIL/joint geometry up to 3 1/8"/80 mm core thickness



DETAIL/joint geometry from 4" / 100 mm core thickness



butt joint:
0.08" ± 0.08" tolerance
2 mm ± 2 mm tolerance

PANEL TYPE	WP 40	WP 50	WP 60	WP 80	WP 100	WP 120	WP 140	WP 150*	WP 160	WP 170	WP 180*	WP 200	WP 220*	WP 250*
core thickness in ≈ inch in mm	1.5" 40	2" 50	2.5" 60	3" 80	4" 100	4.5" 120	5.5" 140	6" 150	6.5" 160	6.7" 170	7" 180	8" 200	8.5" 220	10" 250
PIR+ non-halogen, R-value thermal performance at 75°F	13	16	19	25	31	37	43	46	49	52	55	61	67	76
iQTec on request, R-value thermal performance at 75°F	14	17	20	26	33	39	45	48	51	55	58	64	73	80
weight in lb/ft ² in kg/m ²	2.14 10.45	2.22 10.85	2.30 11.25	2.47 12.05	2.63 12.85	2.80 13.65	2.96 14.45	3.04 14.85	3.12 15.25	3.21 15.65	3.29 16.05	3.45 16.85	3.62 17.65	3.84 18.75

*minimum amount approx. 5500 ft² / 500 m²

MANUFACTURING LENGTHS

39' 2" or 11.95 m (44' 3 1/2" or 13.50 m)

R-VALUE

~7.50 per inch @75°F mean temperature
~8.25 per inch @35°F mean temperature

SPAN WIDTH TABLES

according static tables

PERMANENT TEMPERATURE RESISTANCE

176°F/80°C



BRUCHA panel WP

wall exposed fastener

DESIGN AND SURFACES Standard - coil-coated, hot-dip galvanised steel sheet
food handling areas – test seal for clean room suitability

EXTERIOR

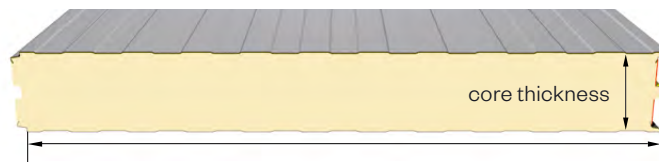
- Exposed side 25 µm polyester coating with a PVC protective film (not UV-resistant - protect from direct sunlight).
The film must be removed before installation or immediately afterwards.
- profile 1 = Standard, for other profiles see WP PROFILE options
- metal gauge: : 24 ga / 0.6 mm (smaller metal gauge on request)

INTERIOR

- Exposed side 25 µm polyester coating with a PVC protective film (not UV-resistant - protect from direct sunlight).
The film must be removed before installation or immediately afterwards.
- profile 1 = standard (profile 2 and 3 on request)
- metal gauge: 26 ga / 0.5 mm (smaller metal gauge on request)

INSULATION CORE

- nonhalogen** PIR/polyurethane rigid foam, approx. 96 % closed cells, continuously foamed
- absolutely no chlorofluorocarbons or halogenated chlorofluorocarbons – pentane foam process
- low thermal conductivity
- securely attached to the steel sheet
- density approx. 2.50 lb/ft³ or 40 kg/m³



construction width 43 2/8" or 1100 mm (39 3/8" or 1000 mm special width on request)

STANDARD COLORS

in accordance with BASIC color range

PANEL CONNECTION

Tongue and groove system and from 4" or 100 mm thickness with labyrinth system.

The exterior and interior sheet steel covers are not connected to each other. The integrated seal ensures optimum wind proofing. The panels interlink precisely with no thermal bridge.

BRUCHA panel WP with polyurethane core can be combined with BRUCHA panel WP-F with mineral wool core using an adaptor panel.

TENDER TEXT

download from: bruchacom

EXTERNAL MONITORING National and international tests and quality standards. We will send the certificates on request.



bruchacom

Contact:

BRUCHA Corp.
4949 S Syracuse Street, Suite 550
Denver, CO 80237

T: 866.BRUCHA1
M: infousa@bruchacom
bruchacom

