

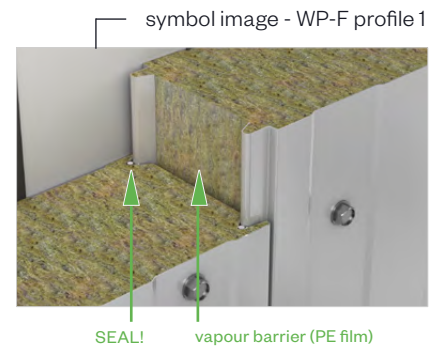
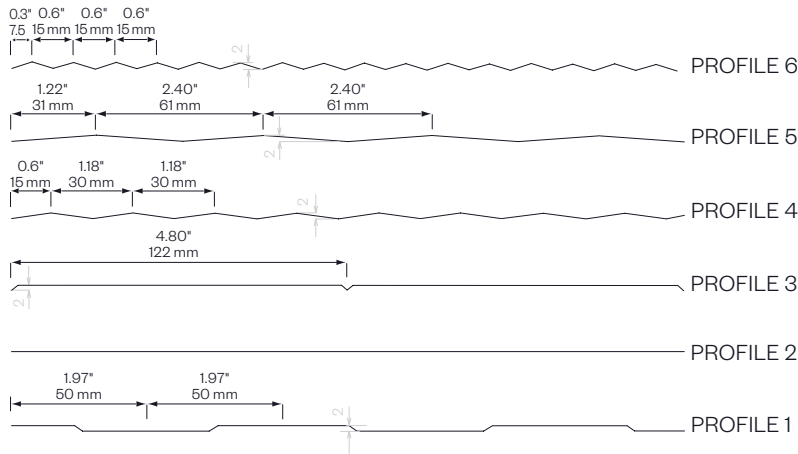
BRUCHA panel WP-F

wall exposed fastener / non-combustible

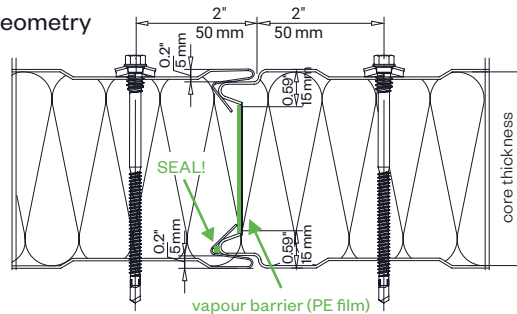


fire protection

exterior PROFILE options - close-up



DETAIL/joint geometry



butt joint:
0.08" = 0.08" tolerance
2 mm ± 2 mm tolerance

PANEL TYPE	WP-F 60	WP-F 80	WP-F 100	WP-F 120	WP-F 140	WP-F 150	WP-F 160	WP-F 180	WP-F 200	WP-F 240
core thickness in ≈ inch in mm	2.5" 60	3" 80	4" 100	4.5" 120	5.5" 140	6" 150	6.5" 160	7" 180	8" 200	9.5" 240
R-value thermal performance	9.5	12	15	18	20.5	22	23	26	29	34
weight in lb/ft ² in kg/m ²	3.36 16.39	3.85 18.79	4.34 21.19	4.83 23.59	5.32 25.99	5.57 27.19	5.81 28.39	6.31 30.79	6.80 33.19	7.78 37.99
fire resistance ANSI/UL 263, CAN/ULC-S101	---	---	EI 60	EI 60	EI 60	EI 120	EI 120	EI 120	EI 120	EI 120

MANUFACTURING LENGTHS

39' 2" or 11.95 m (44' 3 1/2" or 13.50 m)

R-VALUE

~3.8 per inch @75°F mean temperature

SPAN WIDTH TABLES

according static tables

PERMANENT TEMPERATURE RESISTANCE

176°F/80°C





fire protection

BRUCHA panel WP-F

wall exposed fastener / non-combustible

DESIGN AND SURFACES Standard - coil-coated, hot-dip galvanised steel sheet

EXTERIOR

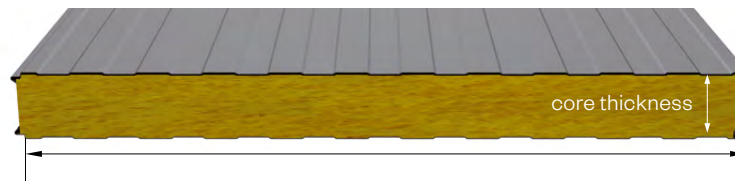
- Exposed side 25 µm polyester coating with a PVC protective film (not UV-resistant - protect from direct sunlight).
The film must be removed before installation or immediately afterwards.
- profile 1 = Standard, for other profiles see WP-F PROFILE options
- metal gauge: 24 ga / 0.6 mm (smaller metal gauge on request)

INTERIOR

- Exposed side 25 µm polyester coating with a PVC protective film (not UV-resistant - protect from direct sunlight).
The film must be removed before installation or immediately afterwards.
- profile 1 = standard (profile 2 and 3 on request)
- metal gauge: 24 ga / 0.6 mm (smaller metal gauge on request)

INSULATION CORE

- structural, web-oriented mineral fibre wool
- securely attached to the sheet steel shell
- density approx. 7.50 lb/ft³ or 120 kg/m³, 8.75 lb/ft³ or 140 kg/m³ available on request



construction width 43 2/8" or 1100 mm
(39 3/8" or 1000 mm special width on request)

STANDARD COLORS

in accordance with BASIC color range

PANEL CONNECTION

Tongue and groove system in which the panels interlink precisely with no thermal bridge.

TENDER TEXT

download from: brucha.com

EXTERNAL MONITORING

National and international tests and quality standards. We will send the certificates on request.

VAPOUR DIFFUSION

Determined by climatic conditions inside building. Panels must be installed vapour tight.

PANEL INSTALLATION

When working with our products, please follow our installation guidelines at brucha.com/downloads

Contact:

BRUCHA Corp.
4949 S Syracuse Street, Suite 550
Denver, CO 80237

T: 866.BRUCHA1
M: infousa@brucha.
bruchaamerica.com



brucha.com

