

**BRUCHA®**



PANELS  
THAT  
CONNECT.



# facade wall

PIR+ /iQTec  
nonhalogen foam technology®

fire protection



# ENVIRONMENTALLY CERTIFIED PRODUCTION

We all rely on the efficient use of energy.

This requires work processes to be as sustainable as possible.



# BRUCHA

always  
one step ahead

We have always been a pioneer in the implementation of efficient energy-saving measures. Numerous actions and projects have been realized in recent years to significantly improve our energy consumption. The implementation of further measures leads to continuous improvements of our production processes, our products and most importantly to new product developments.

Bringing proof that we are a responsible manufacturer, we are certified according to the environmental management system **ISO 14001: since 2013**. All BRUCHA panels with PIR+ and mineral wool core are certified according to the standard for responsible sourcing **BES 6001** - assessment score - **Very Good**.



PANELS  
THAT  
CONNECT.

# BRUCHA panel

# facade wall



assessment score

**Very Good**



## contents

page

### PIR rigid foam

PIR+ nonhalogen/ iQTec® foam technology	4
Facade Premium FP-P concealed fastened	6
Facade Premium Select FP-P-S concealed fastened	8
Facade FP concealed fastened	10
BRUCHA milestones	12
Wall WP exposed fastened	14

### FIRE PROTECTION/mineral wool core

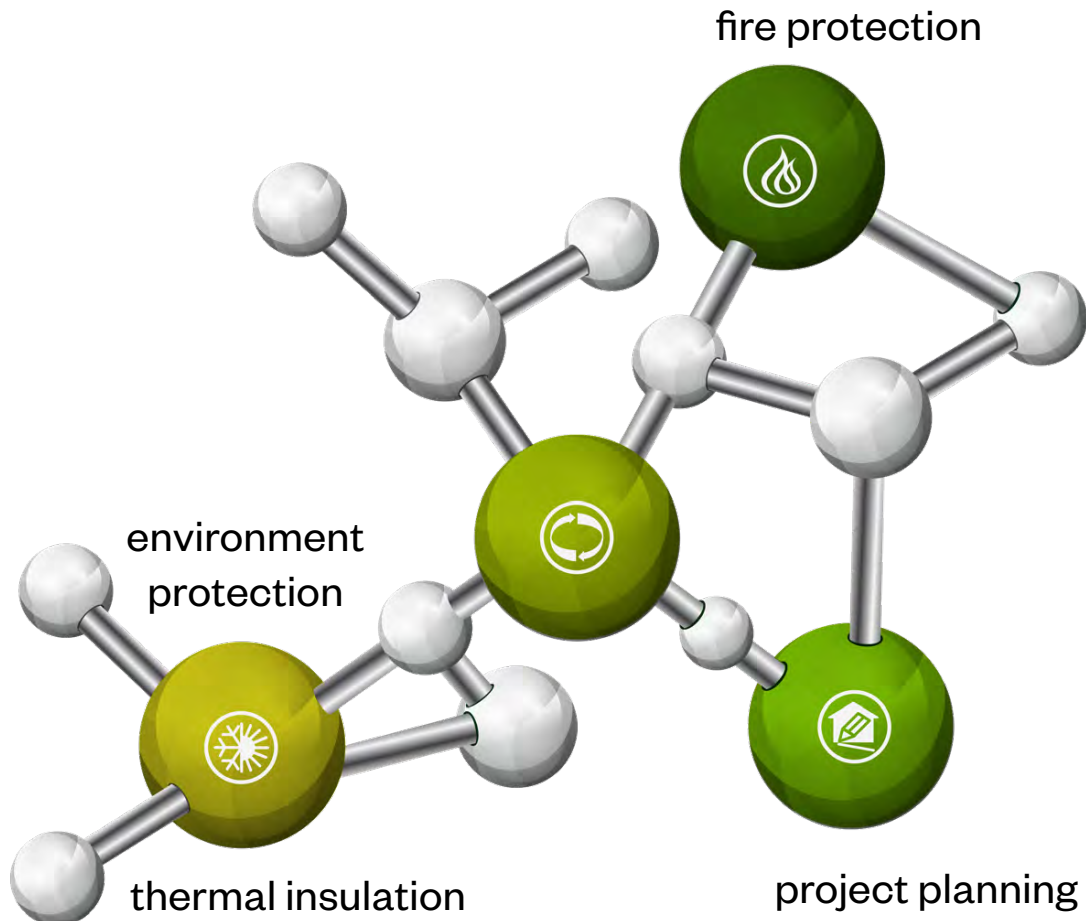
Facade FP-F concealed fastened	18
Wall WP-F exposed fastened	20
Acoustic WP-A exposed fastened	22

PIR+  
nonhalogen

iQTec  
foam technology®

# BRUCHA panel

insulation core



fire behavior  
acc. EN 13501-1

**Euroclass Bs1d0**  
flame protection

excellent  
energy efficiency

low  
**thermal conductivity**

VOC emission  
class A+

outstanding  
**LCA**

low  
operating weight

**high stability,**  
thin construction,  
floor space gain

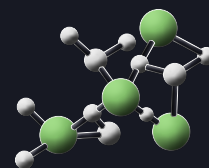
**BRUCHA®**

PANELS  
THAT  
CONNECT.



**PIR+**  
nonhalogen

**iQTec**  
foam technology®



BRUCHA panel | facade  
wall



# BRUCHA panel FP-P

## facade PREMIUM concealed fastened

DESIGN AND SURFACES Standard - coil-coated, hot-dip galvanised steel sheet

### EXTERIOR

- Exposed side 25 µm polyester coating with a PVC protective film (not UV-resistant - protect from direct sunlight).  
The film must be removed before installation or immediately afterwards.
- profile 6 = Standard, for other profiles see FP-P PROFILE options
- metal gauge: 24 ga / 0.6 mm (smaller metal gauge on request)

### INTERIOR

- Exposed side 25 µm polyester coating with a PVC protective film (not UV-resistant - protect from direct sunlight).  
The film must be removed before installation or immediately afterwards.
- profile 1 = standard (profile 2 and 3 on request)
- metal gauge: 26 ga / 0.5 mm (smaller metal gauge on request)

### INSULATION CORE

- nonhalogen** PIR/polyurethane rigid foam, approx. 96 % closed cells, continuously foamed
- absolutely no chlorofluorocarbons or halogenated chlorofluorocarbons – pentane foam process
- low thermal conductivity
- securely attached to the steel sheet
- density approx. 2.50 lb/ft<sup>3</sup> or 40 kg/m<sup>3</sup>



construction width 39.37" or 1000 mm (35.43" or 900 mm special width on request)

### STANDARD COLORS

in accordance with BASIC color range

### PANEL CONNECTION

**Double tongue and groove system** in which the special labyrinth profile allows the screw head to be countersunk and fully covered by the next panel – **covered, concealed fastened**. The integrated seals guarantee maximum wind proofing. The panels interlink precisely with no thermal bridge. The PREMIUM FP-P facade panel offers outstanding structural characteristics, as well as enabling even greater span widths through the use of the pressure distribution plate.

### TENDER TEXT

download from: [bruchacom](http://bruchacom)

### EXTERNAL MONITORING

National and international tests and quality standards. We will send the certificates on request.

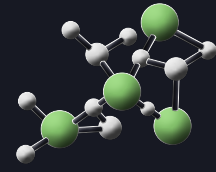


# BRUCHA panel FP-P

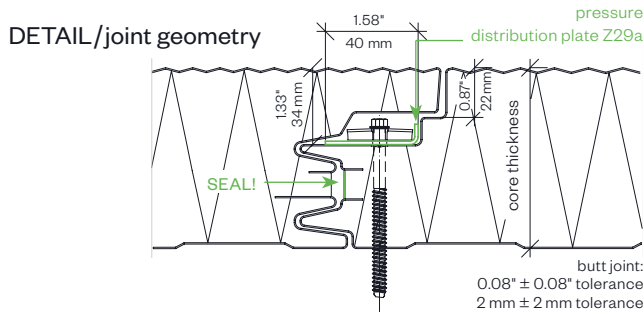
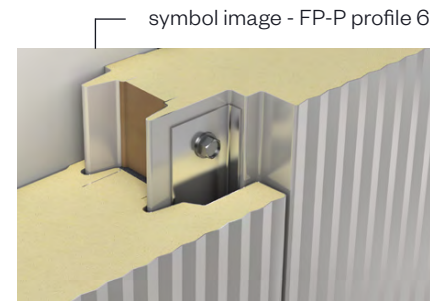
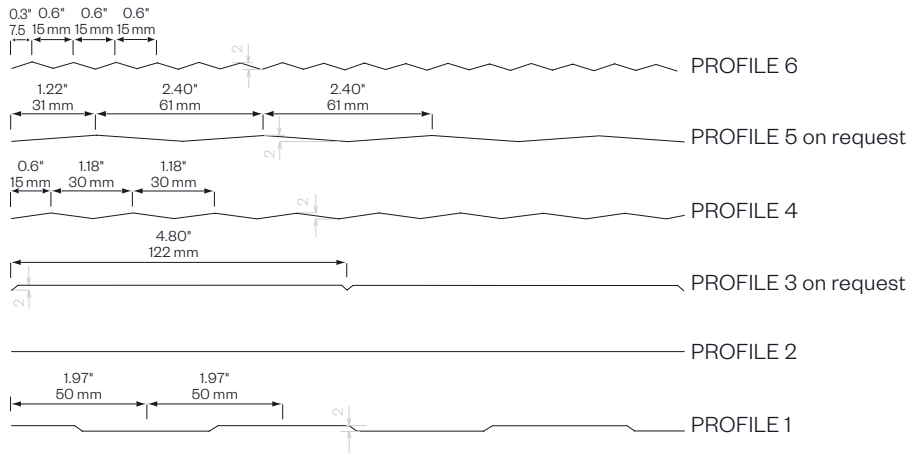
## facade PREMIUM concealed fastened

PIR+  
nonhalogen

iQTec  
foam technology®



### exterior PROFILE options - close-up



PANEL TYPE	FP-P 80	FP-P 100	FP-P 120	FP-P 140	FP-P 160	FP-P 180	FP-P 200
core thickness in ≈ inch	3"	4"	4.5"	5.5"	6.5"	7"	8"
in mm	80	100	120	140	160	180	200
PIR+ non-halogen, R-value thermal performance at 75°F	25	31	37	43	49	55	61
iQTec on request, R-value thermal performance at 75°F	26.5	33	39	45	52	58	64
weight in lb/ft <sup>2</sup>	2.41	2.57	2.73	2.90	3.60	3.23	3.39
in kg/m <sup>2</sup>	11.75	12.55	13.35	14.15	14.95	15.75	16.55

### MANUFACTURING LENGTHS

39' 2" or 11.95 m (44' 3 1/2" or 13.50 m)

### R-VALUE

≈ 7.50 per inch @75°F mean temperature  
≈ 8.25 per inch @35°F mean temperature

### SPAN WIDTH TABLES

according static tables

### PERMANENT TEMPERATURE RESISTANCE

176°F/80°C

# BRUCHA panel FP-P-S

## facade PREMIUM Select concealed fastened

DESIGN AND SURFACES Standard - coil-coated, hot-dip galvanised steel sheet

### EXTERIOR

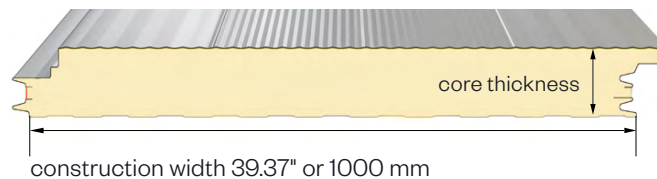
- Exposed side 25 µm polyester coating with a PVC protective film (not UV-resistant - protect from direct sunlight).  
The film must be removed before installation or immediately afterwards.
- profiles 2, 5 and 6, making a total of 19 different profile combination options
- metal gauge: 24 ga / 0.6 mm (smaller metal gauge on request)

### INTERIOR

- Exposed side 25 µm polyester coating with a PVC protective film (not UV-resistant - protect from direct sunlight).  
The film must be removed before installation or immediately afterwards.
- profile 1 = standard (profile 2 and 3 on request)
- metal gauge: 26 ga / 0.5 mm (smaller metal gauge on request)

### INSULATION CORE

- nonhalogen** PIR/polyurethane rigid foam, approx. 96 % closed cells, continuously foamed
- absolutely no chlorofluorocarbons or halogenated chlorofluorocarbons – pentane foam process
- low thermal conductivity
- securely attached to the steel sheet
- density approx. 2.50 lb/ft<sup>3</sup> or 40 kg/m<sup>3</sup>



### STANDARD COLORS

in accordance with BASIC color range

### PANEL CONNECTION

Double tongue and groove system in which the special labyrinth profile allows the screw head to be countersunk and fully covered by the next panel – **covered, concealed fastened**. The integrated seals guarantee maximum wind proofing.

The panels interlink precisely with no thermal bridge. The PREMIUM FP-P-S facade panel offers outstanding structural characteristics, as well as enabling even greater span widths through the use of the pressure distribution plate.

### TENDER TEXT

download from: [bruchacom](http://bruchacom)

### EXTERNAL MONITORING

National and international tests and quality standards. We will send the certificates on request.



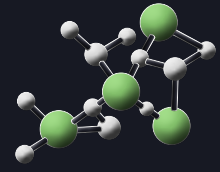


# BRUCHA panel FP-P-S

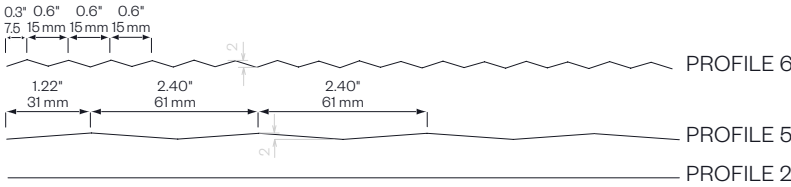
## facade PREMIUM Select concealed fastened

PIR+  
nonhalogen

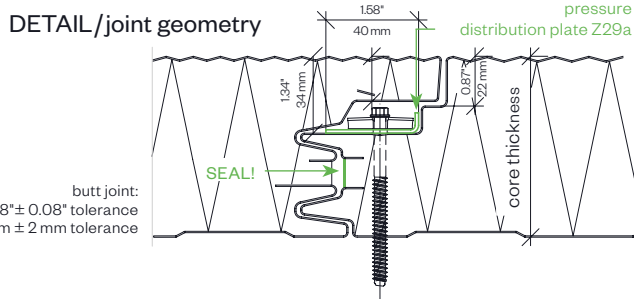
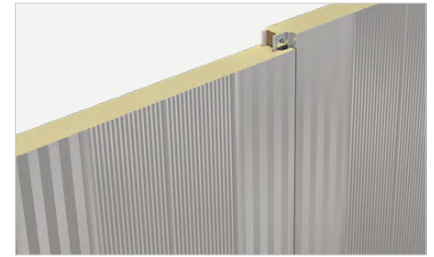
iQTec  
foam technology®



### exterior PROFILE options - close-up



symbol image - FP-P-S profile 5-6-6-5



butt joint:  
0.08" ± 0.08" tolerance  
2 mm ± 2 mm tolerance

### exterior PROFILE combination options

VARIANTS	1	2	3	4	5	6	7	8	9	10	11	12	13	14	15	16	17	18	19
profile pair	2	2 and 6				2 and 5						5 and 6							
RIGHT	2	2	2	6	2	6	6	2	2	5	2	5	5	5	5	6	6	5	6
panel orientation	2	2	6	2	6	2	6	2	5	2	5	2	5	5	6	5	5	6	6
LEFT	2	6	2	2	6	6	2	5	2	2	5	5	2	6	5	5	6	6	5

PANEL TYPE	FP-P 80	FP-P 100	FP-P 120	FP-P 140	FP-P 160	FP-P 180	FP-P 200
core thickness in ≈ inch	3"	4"	4.5"	5.5"	6.5"	7"	8"
in mm	80	100	120	140	160	180	200
PIR+ non-halogen R-value thermal performance at 75°F	25	31	37	43	49	55	61
iQTec on request R-value thermal performance at 75°F	26.5	33	39	45	52	58	64
weight in lb/ft <sup>2</sup>	2.41	2.57	2.73	2.90	3.06	3.23	3.39
in kg/m <sup>2</sup>	11.75	12.55	13.35	14.15	14.95	15.75	16.55

### MANUFACTURING LENGTHS

39' 2" or 11.95 m (44' 3 1/2" or 13.50 m)

### R-VALUE

≈ 7.50 per inch @75°F mean temperature  
≈ 8.25 per inch @35°F mean temperature

### SPAN WIDTH TABLES

according static tables

### PERMANENT TEMPERATURE RESISTANCE

176°F/80°C

# BRUCHA panel FP

## facade concealed fastened

DESIGN AND SURFACES Standard - coil-coated, hot-dip galvanised steel sheet

### EXTERIOR

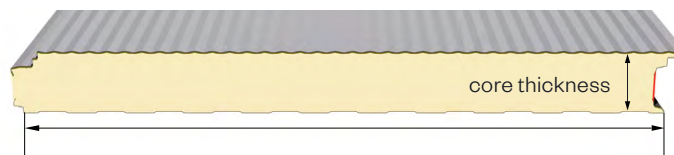
- Exposed side 25 µm polyester coating with a PVC protective film (not UV-resistant - protect from direct sunlight).  
The film must be removed before installation or immediately afterwards.
- profile 5 = Standard, for other profiles see FP PROFILE options
- metal gauge: 24 ga / 0.6 mm (smaller metal gauge on request)

### INTERIOR

- Exposed side 25 µm polyester coating with a PVC protective film (not UV-resistant - protect from direct sunlight).  
The film must be removed before installation or immediately afterwards.
- profile 1 = standard (profile 2 and 3 on request)
- metal gauge: 26 ga / 0.5 mm (smaller metal gauge on request)

### INSULATION CORE

- nonhalogen** PIR/polyurethane rigid foam, approx. 96 % closed cells, continuously foamed
- absolutely no chlorofluorocarbons or halogenated chlorofluorocarbons – pentane foam process
- low thermal conductivity
- securely attached to the steel sheet
- density approx. 2.50 lb/ft<sup>3</sup> or 40 kg/m<sup>3</sup>



construction width 43.31" or 1100 mm (39.37" or 1000 mm special width on request)

### STANDARD COLORS

in accordance with BASIC color range

### PANEL CONNECTION

**Tongue and groove system** in which the special labyrinth profile allows the screw head to be countersunk and fully covered by the next panel – **covered, concealed mounting**. The integrated seals guarantee maximum wind proofing.

The panels interlink precisely with no thermal bridge.

BRUCHA panel FP with PIR/polyurethane core can be combined with BRUCHA panel FP-F with mineral wool core using an adaptor panel.

### TENDER TEXT

download from: brucha.com

### EXTERNAL MONITORING

National and international tests and quality standards. We will send the certificates on request.

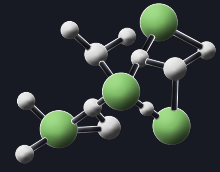


# BRUCHA panel FP

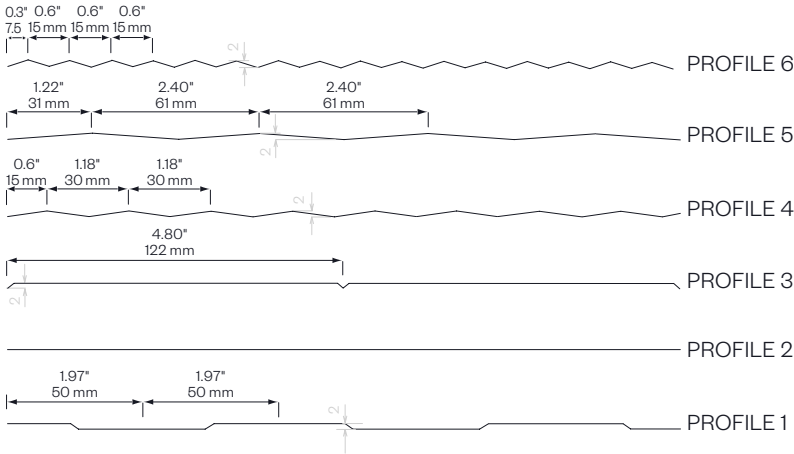
## facade concealed fastened

PIR+  
nonhalogen

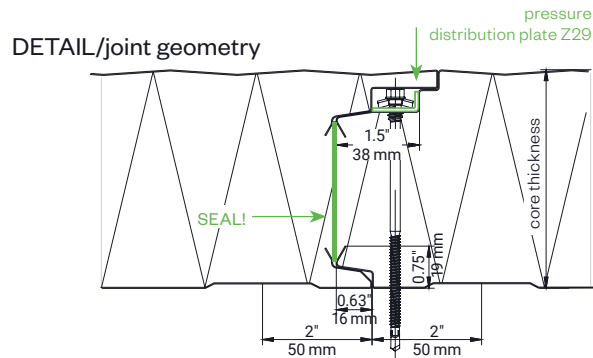
iQTec  
foam technology®



### exterior PROFILE options - close-up



symbol image - FP profile 5



butt joint:  
0.08" ± 0.08" tolerance  
2 mm ± 2 mm tolerance

PANEL TYPE	FP 60
core thickness in ≈ inch	2.5"
in mm	60
PIR+ non-halogen, R-value thermal performance at 75°F	19
iQTec on request, R-value thermal performance at 75°F	20
weight in lb/ft <sup>2</sup>	2.30
in kg/m <sup>2</sup>	11.24

### MANUFACTURING LENGTHS

39' 2" or 11.95 m (44' 3 1/2" or 13.50 m)

### R-VALUE

≈ 7.50 per inch @75°F mean temperature  
≈ 8.25 per inch @35°F mean temperature

### SPAN WIDTH TABLES

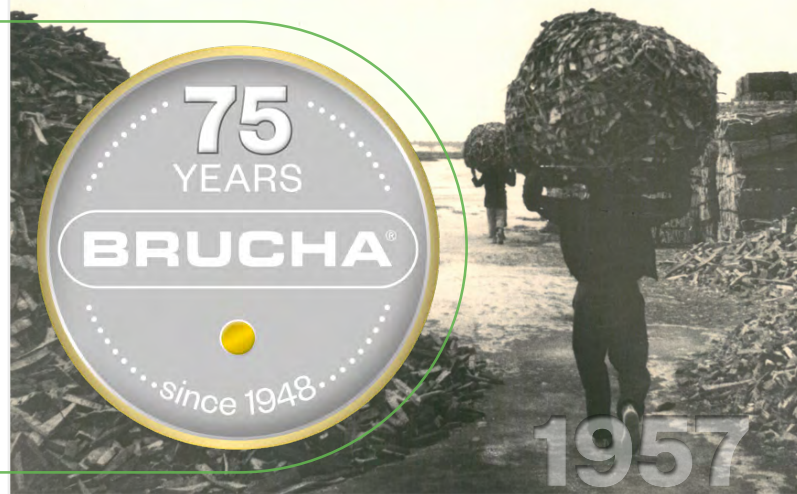
according static tables

### PERMANENT TEMPERATURE RESISTANCE

176°F/80°C

# BRUCHA milestones

- Inaugurated in 1948 in Michelhausen, Austria
- A proud Austrian family business, thriving across four generations
- Pioneered discontinuous sandwich panel production in 1978
- Embarked on an internationalization journey in 1984
- Achieved four continuous production lines by 1998
- Boasts a production area exceeding 1 million square feet
- Employs a dedicated workforce of 800+
- Subsidiaries and partners spanning all continents



## BRUCHA Corp. / Denver, CO

subsidiary company founded 2018

- Producer of the proven BRUCHA panel for facade and cold room construction
- Ongoing product development with regard to quality and environmental protection
- Use of the latest production equipment
- State of the art manufacturing
- ISO 14001 since 2019
- Brucha green building - we fulfill all current environmental certifications



## PROJECTS

- Industrial and food processing plants
- Stainless steel and FRP panels
- Hinged and sliding doors
- Ram protection systems
- Clean rooms and special construction
- CA and OxyReduct warehouses
- High bay warehouse construction
- Worldwide supervisor - assembly
- Engineering



*Euro Swiss Food Incorporated* **ESFI FOOD PROCESSING PLANT**  
is a LEED®-registered project submitted at Silver level of certification.

**On-Site Renewable Energy**  
Photovoltaics will offset an estimated 10% of total Annual Energy demand.

**Water Use Reduction**  
Efficient Plumbing Fixture and Sewage Treatment Plant will save up to 70% of Annual Potable Water Consumption.

**Non-Toxic Finishes**  
Adhesives, sealants, paints and coatings with low Volatile Organic Compound content were used in the interior of the building.

**BREEM® EXCELLENT**

"Bream Excellent design certificate" for its sustainable construction



1960



2023



## PRODUCTS

- BRUCHA panels facade / wall and roof with PIR+ or mineral wool insulation core for fire protection
- Coldroom & freezer walk-in boxes
- Hinged and sliding doors for chiller-, freezer- and froster rooms
- High bay / CA storage / clean rooms
- Flashings & accessories

## ENVIRONMENTAL POLICY

some of our certificates

- **ISO 14001:2015** – since 2019 environmental management
- **BES 6001** – **Very Good** responsible procurement of building products
- **ISO 9001:2015**
- Cradle-to-Cradle – circular economy
- **Non Halogen PIR+ Foam** = Non toxic smoke
- 30 % recycled content in our PIR+ Foam
- Usage of **greentec steel** – reduced carbon footprint
- Listing in the DGNB Navigator
- Factsheets for LEED v4 and BREEAM
- EPDs product declarations for all BRUCHA panels



DGNB Platin ÖGNI award for the ecological performance of the building

## CERTIFICATIONS



details about it on our website



[brucha.com/en/downloads-certificates](https://brucha.com/en/downloads-certificates)

# BRUCHA panel WP

## wall exposed fastener

DESIGN AND SURFACES Standard - coil-coated, hot-dip galvanised steel sheet  
food handling areas – test seal for clean room suitability

### EXTERIOR

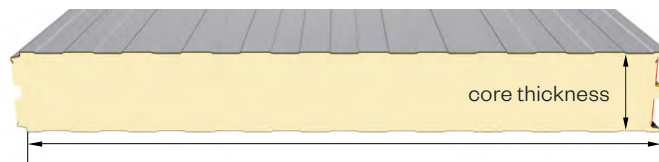
- Exposed side 25 µm polyester coating with a PVC protective film (not UV-resistant - protect from direct sunlight).  
The film must be removed before installation or immediately afterwards.
- profile 1 = Standard, for other profiles see WP PROFILE options
- metal gauge: : 24 ga / 0.6 mm (smaller metal gauge on request)

### INTERIOR

- Exposed side 25 µm polyester coating with a PVC protective film (not UV-resistant - protect from direct sunlight).  
The film must be removed before installation or immediately afterwards.
- profile 1 = standard (profile 2 and 3 on request)
- metal gauge: 26 ga / 0.5 mm (smaller metal gauge on request)

### INSULATION CORE

- nonhalogen** PIR/polyurethane rigid foam, approx. 96 % closed cells, continuously foamed
- absolutely no chlorofluorocarbons or halogenated chlorofluorocarbons – pentane foam process
- low thermal conductivity
- securely attached to the steel sheet
- density approx. 2.50 lb/ft<sup>3</sup> or 40 kg/m<sup>3</sup>



construction width 43.31" or 1100 mm (39.37" or 1000 mm special width on request)

### STANDARD COLORS

in accordance with BASIC color range

### PANEL CONNECTION

**Tongue and groove system** and from 4" or 100 mm thickness with labyrinth system.

The exterior and interior sheet steel covers are not connected to each other. The integrated seal ensures optimum wind proofing. The panels interlink precisely with no thermal bridge.

BRUCHA panel WP with polyurethane core can be combined with BRUCHA panel WP-F with mineral wool core using an adaptor panel.

### TENDER TEXT

download from: [bruchacom](http://bruchacom)

**EXTERNAL MONITORING** National and international tests and quality standards. We will send the certificates on request.

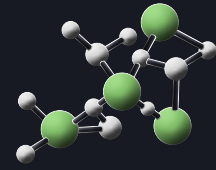


# BRUCHA panel WP

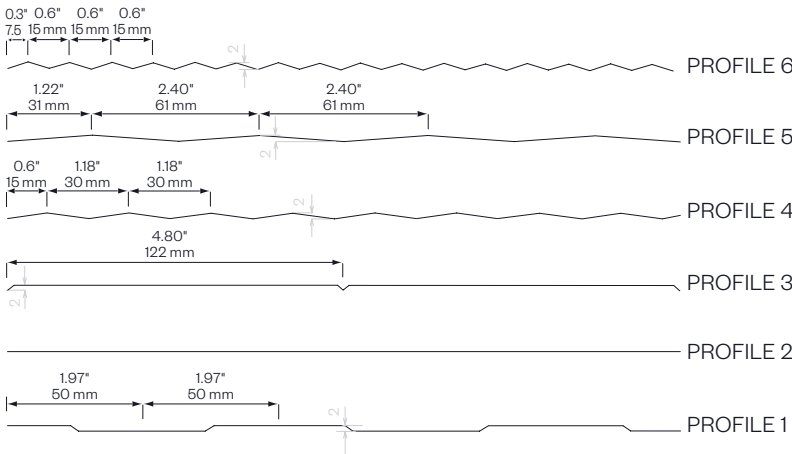
## wall exposed fastener

PIR+  
nonhalogen

iQTec  
foam technology®



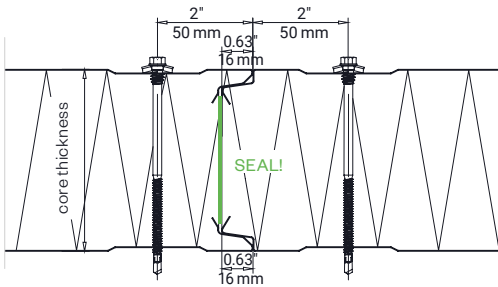
### exterior PROFILE options - close-up



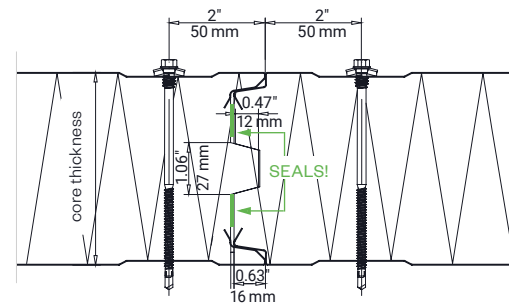
symbol image - WP profile 1



### DETAIL/joint geometry up to 3 1/8"/80 mm core thickness



### DETAIL/joint geometry from 4" / 100 mm core thickness



butt joint:  
0.08" ± 0.08" tolerance  
2 mm ± 2 mm tolerance

PANEL TYPE	WP 40	WP 50	WP 60	WP 80	WP 100	WP 120	WP 140	WP 150*	WP 160	WP 170	WP 180*	WP 200	WP 220*	WP 250*
core thickness in ≈ inch in mm	1.5" 40	2" 50	2.5" 60	3" 80	4" 100	4.5" 120	5.5" 140	6" 150	6.5" 160	6.7" 170	7" 180	8" 200	8.5" 220	10" 250
PIR+ non-halogen, R-value thermal performance at 75°F	13	16	19	25	31	37	43	46	49	52	55	61	67	76
iQTec on request, R-value thermal performance at 75°F	14	17	20	26	33	39	45	48	51	55	58	64	73	80
weight in lb/ft <sup>2</sup> in kg/m <sup>2</sup>	2.14 10.45	2.22 10.85	2.30 11.25	2.47 12.05	2.63 12.85	2.80 13.65	2.96 14.45	3.04 14.85	3.12 15.25	3.21 15.65	3.29 16.05	3.45 16.85	3.62 17.65	3.84 18.75

\*minimum amount approx. 5500 ft<sup>2</sup> / 500 m<sup>2</sup>

### MANUFACTURING LENGTHS

39' 2" or 11.95 m (44' 3 1/2" or 13.50 m)

### R-VALUE

≈ 7.50 per inch @75°F mean temperature  
≈ 8.25 per inch @35°F mean temperature

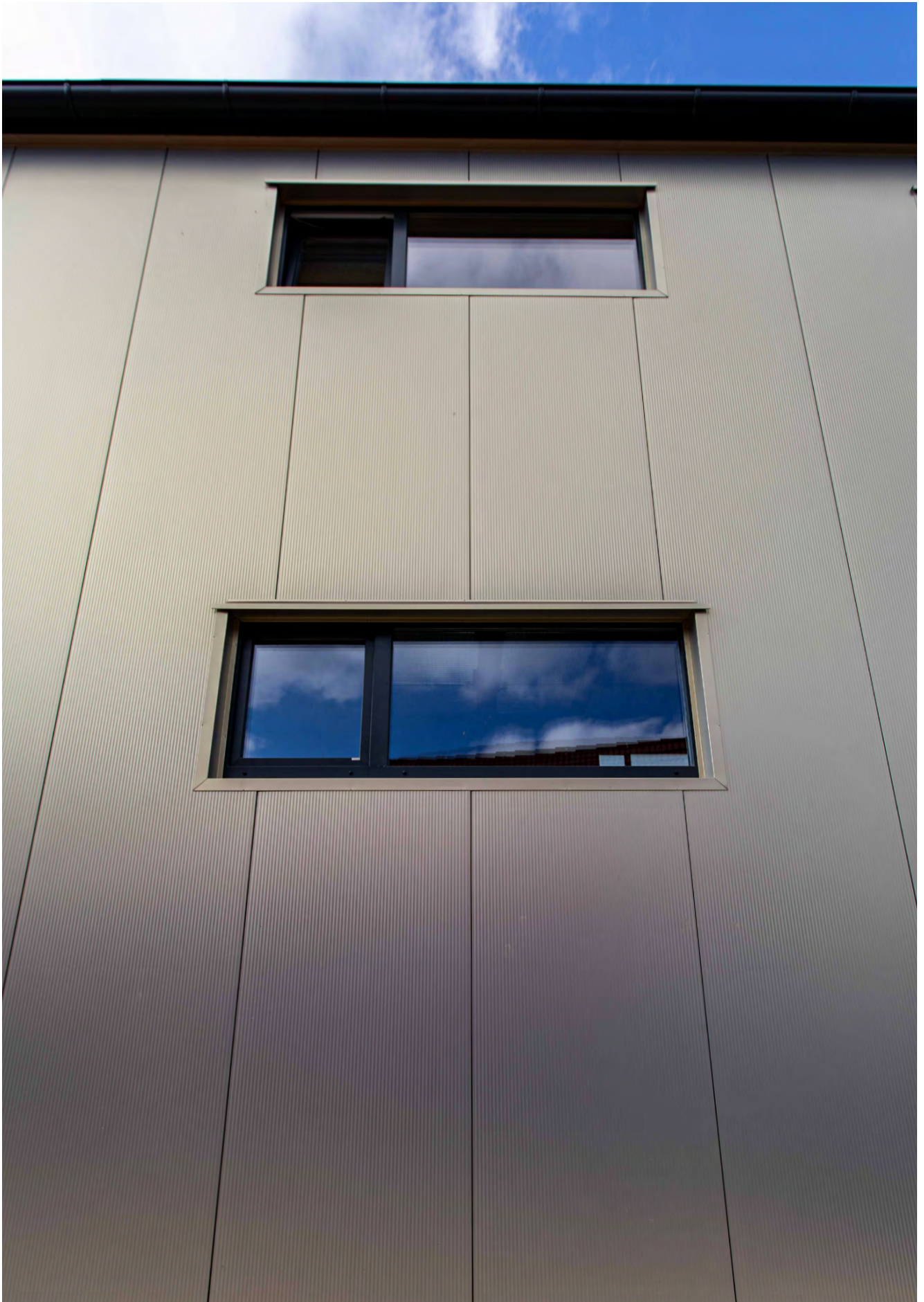
### SPAN WIDTH TABLES

according static tables

### PERMANENT TEMPERATURE RESISTANCE

176°F/80°C







**BRUCHA®**

PANELS  
THAT  
CONNECT.



fire protection

# BRUCHA panel | facade wall





fire protection

# BRUCHA panel FP-F

## facade concealed fastened / non-combustible

DESIGN AND SURFACES Standard - coil-coated, hot-dip galvanised steel sheet

### EXTERIOR

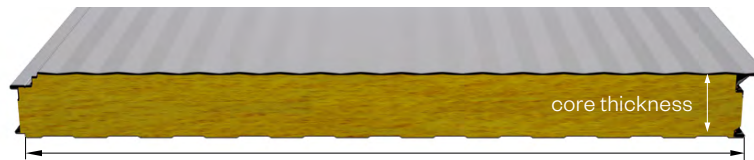
- Exposed side 25 µm polyester coating with a PVC protective film (not UV-resistant - protect from direct sunlight).  
The film must be removed before installation or immediately afterwards.
- profile 1 = Standard, for other profiles see FP-F PROFILE options
- metal gauge: : 24 ga / 0.6 mm (smaller metal gauge on request)

### INTERIOR

- Exposed side 25 µm polyester coating with a PVC protective film (not UV-resistant - protect from direct sunlight).  
The film must be removed before installation or immediately afterwards.
- profile 1 = standard (profile 2 and 3 on request)
- metal gauge: 24 ga / 0.6 mm (smaller metal gauge on request)

### INSULATION CORE

- structural, web-oriented mineral fibre wool
- securely attached to the sheet steel shell
- density approx. 7.50 lb/ft<sup>3</sup> or 120 kg/m<sup>3</sup>, 8.75 lb/ft<sup>3</sup> or 140 kg/m<sup>3</sup> available on request



construction width 43.31" or 1100 mm  
(39.37" or 1000 mm special width on request)

### STANDARD COLORS

in accordance with BASIC color range

### PANEL CONNECTION

**Tongue and groove system** in which the special labyrinth profile allows the screw head to be countersunk and fully covered by the next panel – **covered, concealed mounting**. BRUCHA panel FP-F with mineral wool core can be combined with BRUCHA panel FP with PIR/polyurethane core using an adaptor panel.

### TENDER TEXT

download from: brucha.com

### EXTERNAL MONITORING

National and international tests and quality standards. We will send the certificates on request.

### VAPOUR DIFFUSION

Determined by climatic conditions inside building. Panels must be installed vapour tight.

### PANEL INSTALLATION

When working with our products, please follow our installation guidelines at brucha.com/downloads.



brucha.com



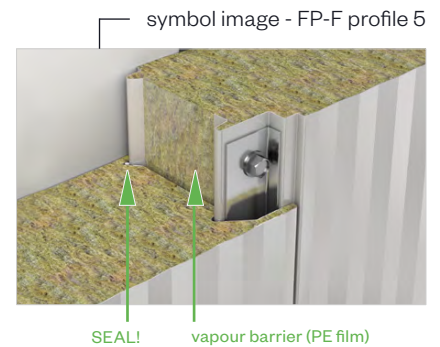
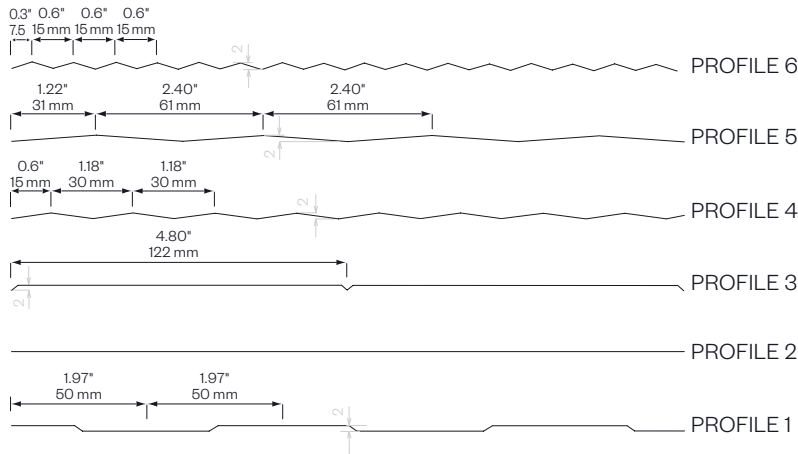
# BRUCHA panel FP-F

facade concealed fastened / non-combustible

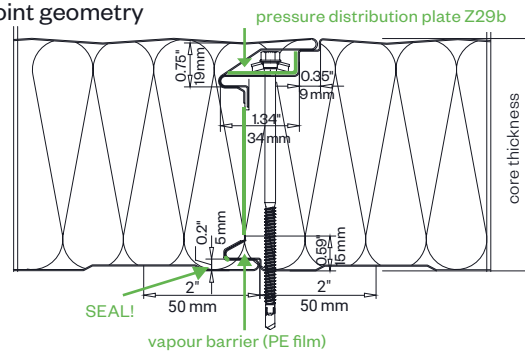


fire protection

## exterior PROFILE options - close-up



## DETAIL/joint geometry



butt joint:  
0.08" = 0.08" tolerance  
2 mm ± 2 mm tolerance

PANEL TYPE	FP-F 60	FP-F 80	FP-F 100	FP-F 120	FP-F 140	FP-F 150	FP-F 160	FP-F 180	FP-F 200	FP-F 240
core thickness in ≈ inch in mm	2.5" 60	3" 80	4" 100	4.5" 120	5.5" 140	6" 150	6.5" 160	7" 180	8" 200	9.5" 240
R-value thermal performance	9.5	12	15	18	20.5	22	23	26	29	34
weight in lb/ft <sup>2</sup> in kg/m <sup>2</sup>	3.35 16.38	3.85 18.78	4.34 21.18	4.83 23.58	5.32 25.98	5.75 27.18	5.81 28.38	6.30 30.78	6.80 33.18	7.78 37.98
fire resistance ANSI/UL 263, CAN/ULC-S101	---	---	EI 60	EI 60	EI 60	EI 120	EI 120	EI 120	EI 120	EI 120

### MANUFACTURING LENGTHS

39' 2" or 11.95 m (44' 3 1/2" or 13.50 m)

### R-VALUE

≈ 3.8 per inch @75°F mean temperature

### SPAN WIDTH TABLES

according static tables

### PERMANENT TEMPERATURE RESISTANCE

176°F/80°C





fire protection

# BRUCHA panel WP-F

## wall exposed fastener / non-combustible

DESIGN AND SURFACES Standard - coil-coated, hot-dip galvanised steel sheet

### EXTERIOR

- Exposed side 25 µm polyester coating with a PVC protective film (not UV-resistant - protect from direct sunlight).  
The film must be removed before installation or immediately afterwards.
- profile 1 = Standard, for other profiles see WP-F PROFILE options
- metal gauge: 24 ga / 0.6 mm (smaller metal gauge on request)

### INTERIOR

- Exposed side 25 µm polyester coating with a PVC protective film (not UV-resistant - protect from direct sunlight).  
The film must be removed before installation or immediately afterwards.
- profile 1 = standard (profile 2 and 3 on request)
- metal gauge: 24 ga / 0.6 mm (smaller metal gauge on request)

### INSULATION CORE

- structural, web-oriented mineral fibre wool
- securely attached to the sheet steel shell
- density approx. 7.50 lb/ft<sup>3</sup> or 120 kg/m<sup>3</sup>, 8.75 lb/ft<sup>3</sup> or 140 kg/m<sup>3</sup> available on request



construction width 43.31" or 1100 mm  
(39.37" or 1000 mm special width on request )

### STANDARD COLORS

in accordance with BASIC color range

### PANEL CONNECTION

**Tongue and groove system** in which the panels interlink precisely with no thermal bridge.

### TENDER TEXT

download from: [bruchacom](http://bruchacom)

### EXTERNAL MONITORING

National and international tests and quality standards. We will send the certificates on request.

### VAPOUR DIFFUSION

Determined by climatic conditions inside building. Panels must be installed vapour tight.

### PANEL INSTALLATION

When working with our products, please follow our installation guidelines at [bruchacom/downloads](http://bruchacom/downloads)



[bruchacom](http://bruchacom)



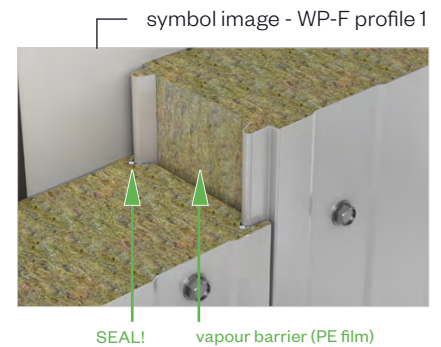
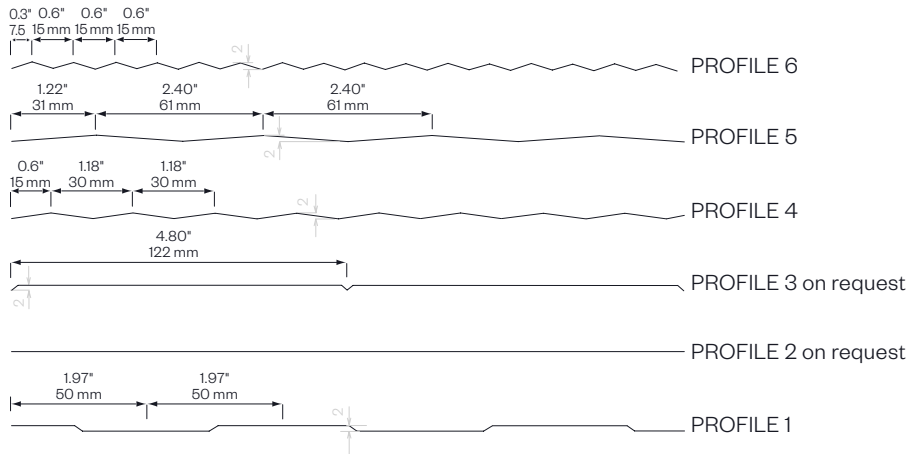
# BRUCHA panel WP-F

wall exposed fastener / non-combustible

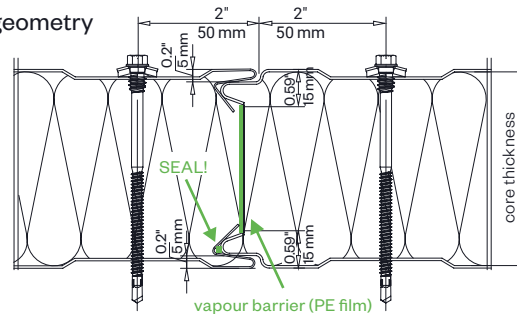


fire protection

## exterior PROFILE options - close-up



## DETAIL/joint geometry



butt joint:  
0.08" = 0.08" tolerance  
2 mm ± 2 mm tolerance

PANEL TYPE	WP-F 60	WP-F 80	WP-F 100	WP-F 120	WP-F 140	WP-F 150	WP-F 160	WP-F 180	WP-F 200	WP-F 240
core thickness in ≈ inch in mm	2.5" 60	3" 80	4" 100	4.5" 120	5.5" 140	6" 150	6.5" 160	7" 180	8" 200	9.5" 240
R-value thermal performance	9.5	12	15	18	20.5	22	23	26	29	34
weight in lb/ft <sup>2</sup> in kg/m <sup>2</sup>	3.36 16.39	3.85 18.79	4.34 21.19	4.83 23.59	5.32 25.99	5.57 27.19	5.81 28.39	6.31 30.79	6.80 33.19	7.78 37.99
fire resistance ANSI/UL 263, CAN/ULC-S101	---	---	EI 60	EI 60	EI 60	EI 120	EI 120	EI 120	EI 120	EI 120

### MANUFACTURING LENGTHS

39' 2" or 11.95 m (44' 3 1/2" or 13.50 m)

### R-VALUE

≈ 3.8 per inch @75°F mean temperature

### SPAN WIDTH TABLES

according static tables

### PERMANENT TEMPERATURE RESISTANCE

176°F/80°C





fire protection

# BRUCHA panel WP-A

## Acoustic wall exposed fastener / non-combustible

DESIGN AND SURFACES Standard - coil-coated, hot-dip galvanised steel sheet

### EXTERIOR

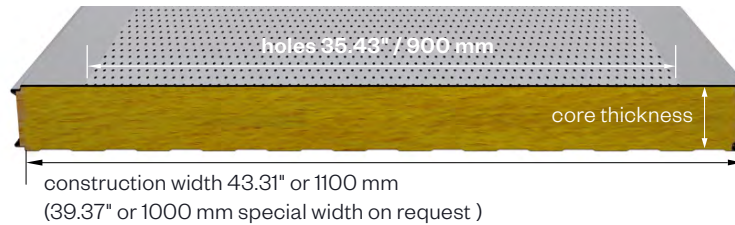
- Exposed side 25 µm polyester coating with a PVC protective film (not UV-resistant - protect from direct sunlight).  
The film must be removed before installation or immediately afterwards.
- profile 1 = Standard, for other profiles see WP-A PROFILE options
- metal gauge: 24 ga / 0.6 mm (smaller metal gauge on request)

### INTERIOR

- Exposed side 25 µm polyester coating with a PVC protective film (not UV-resistant - protect from direct sunlight).  
The film must be removed before installation or immediately afterwards.
- profile 2
- hole proportion: 32.5 %
- bore diameter: 0.12" / 3 mm round bore, offset (0.2" / 5 mm distance)
- holes: DIN RV 3-5 (R3T5) (730-000)
- metal gauge: 24 ga / 0.6 mm (smaller metal gauge on request)

### INSULATION CORE

- structural, web-oriented mineral fibre wool
- securely attached to the sheet steel shell
- density approx. 7.50 lb/ft<sup>3</sup> or 120 kg/m<sup>3</sup>, 8.75 lb/ft<sup>3</sup> or 140 kg/m<sup>3</sup> available on request
- mat: glass fibre mat SM60/10 as trickle protection



### STANDARD COLORS

in accordance with BASIC color range

### PANEL CONNECTION

**Tongue and groove system** in which the panels interlink precisely with no thermal bridge.

### TENDER TEXT

download from: [bruchacom](http://bruchacom)

### EXTERNAL MONITORING

National and international tests and quality standards. We will send the certificates on request.

### VAPOUR DIFFUSION

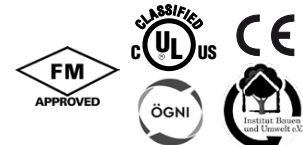
Determined by climatic conditions inside building. Panels must be installed vapour tight.

### PANEL INSTALLATION

When working with our products, please follow our installation guidelines at [bruchacom](http://bruchacom)/downloads



[bruchacom](http://bruchacom)



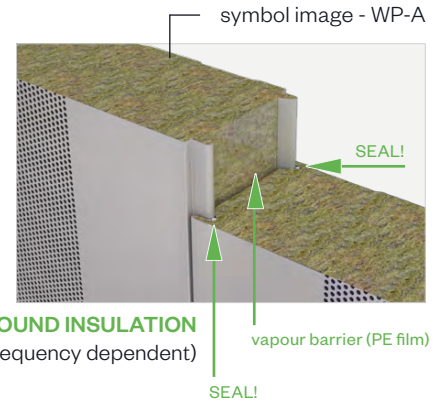
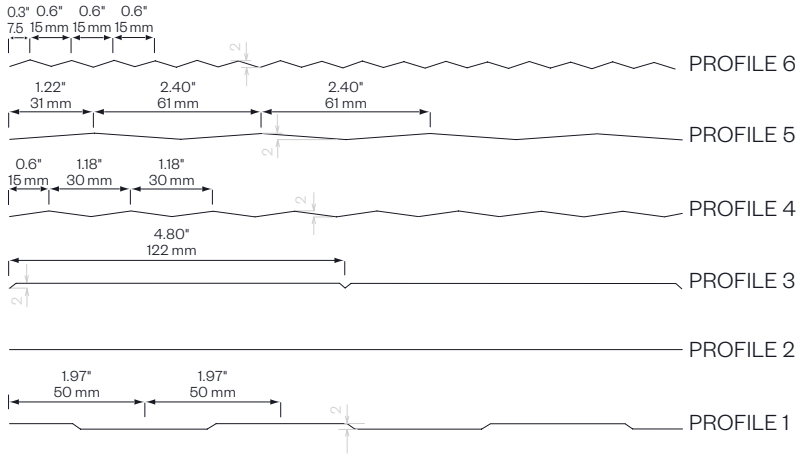
# BRUCHA panel WP-A

## Acoustic wall exposed fastener / non-combustible

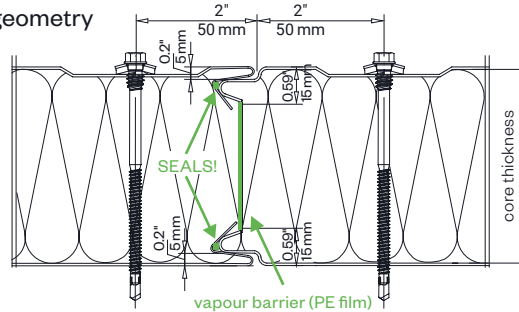


fire protection

### exterior PROFILE options - close-up



### DETAIL/joint geometry



butt joint:  
0.08" = 0.08" tolerance  
2 mm ± 2 mm tolerance

PANEL TYPE	WP-A 60	WP-A 80	WP-A 100	WP-A 120	WP-A 140	WP-A 150	WP-A 160	WP-A 180	WP-A 200	WP-A 240
core thickness in ≈ inch in mm	2.5" 60	3" 80	4" 100	4.5" 120	5.5" 140	6" 150	6.5" 160	7" 180	8" 200	9.5" 240
R-value thermal performance	9.5	12	15	18	20.5	22	23	26	29	34
weight in lb/ft <sup>2</sup> in kg/m <sup>2</sup>	3.36 16.39	3.85 18.79	4.34 21.19	4.83 23.59	5.32 25.99	5.57 27.19	5.81 28.39	6.31 30.79	6.80 33.19	7.78 37.99
fire resistance ANSI/UL 263, CAN/ULC-S101	---	---	EI 60	EI 60	EI 60	EI 120	EI 120	EI 120	EI 120	EI 120

### SOUND INSULATION

32 dB (frequency dependent)

### MANUFACTURING LENGTHS

39' 2" or 11.95 m (44' 3 1/2" or 13.50 m)

### R-VALUE

≈ 3.8 per inch @75°F mean temperature

### SPAN WIDTH TABLES

according static tables

### PERMANENT TEMPERATURE RESISTANCE

176°F/80°C



**BRUCHA®**

# PANELS THAT CONNECT.



*Contact:*

BRUCHA Corp.  
4949 S Syracuse Street, Suite 550  
Denver, CO 80237

T: 866.BRUCHA1  
M: infousa@brucha.com  
**bruchaamerica.com**

## PRODUCTS

- > BRUCHA IMP panels
- > Cold & freezer rooms
- > High bay warehouses
- > Hinged and sliding doors
- > Accessories
- > CA storage/Clean rooms

## SERVICES

- > Assemblies  
for special & cold room  
construction
- > BRUCHA  
Food Engineering  
Design, Layout, Planning, BOM

## *Headquarters/production*

BRUCHA GesmbH  
Rusterstraße 33  
AT-3451 Michelhausen  
Austria - Europe

# brucha.com