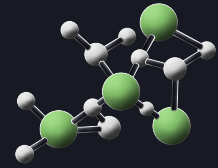


# BRUCHA panel FP

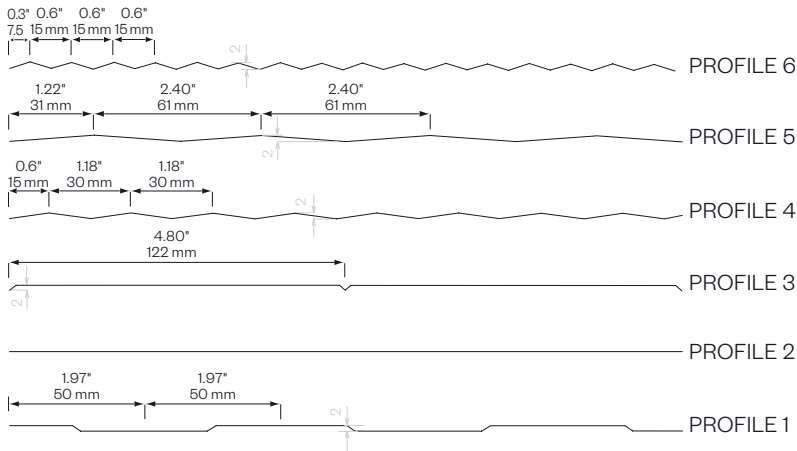
facade concealed fastened

PIR+  
nonhalogen

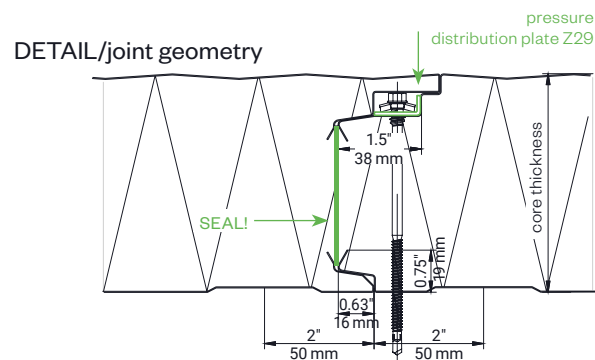
iQTec  
foam technology®



## exterior PROFILE options - close-up



symbol image - FP profile 5



butt joint:  
0.08" ± 0.08" tolerance  
2 mm ± 2 mm tolerance

PANEL TYPE	FP 60
core thickness in ≈ inch in mm	2.5" 60
PIR+ non-halogen, R-value thermal performance at 75°F	19
iQTec on request, R-value thermal performance at 75°F	20
weight in lb/ft² in kg/m²	2.30 11.24

## MANUFACTURING LENGTHS

39' 2" or 11.95 m (44' 3 1/2" or 13.50 m)

## R-VALUE

≈ 7.50 per inch @75°F mean temperature  
≈ 8.25 per inch @35°F mean temperature

## SPAN WIDTH TABLES

according static tables

## PERMANENT TEMPERATURE RESISTANCE

176°F/80°C

# BRUCHA panel FP

## facade concealed fastened

DESIGN AND SURFACES Standard - coil-coated, hot-dip galvanised steel sheet

### EXTERIOR

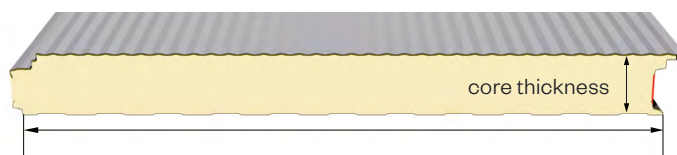
- Exposed side 25 µm polyester coating with a PVC protective film (not UV-resistant - protect from direct sunlight).  
The film must be removed before installation or immediately afterwards.
- profile 5 = Standard, for other profiles see FP PROFILE options
- metal gauge: 24 ga / 0.6 mm (smaller metal gauge on request)

### INTERIOR

- Exposed side 25 µm polyester coating with a PVC protective film (not UV-resistant - protect from direct sunlight).  
The film must be removed before installation or immediately afterwards.
- profile 1 = standard (profile 2 and 3 on request)
- metal gauge: 26 ga / 0.5 mm (smaller metal gauge on request)

### INSULATION CORE

- nonhalogen** PIR/polyurethane rigid foam, approx. 96 % closed cells, continuously foamed
- absolutely no chlorofluorocarbons or halogenated chlorofluorocarbons – pentane foam process
- low thermal conductivity
- securely attached to the steel sheet
- density approx. 2.50 lb/ft³ or 40 kg/m³



construction width 43.31" or 1100 mm (39.37" or 1000 mm special width on request)

### STANDARD COLORS

in accordance with BASIC color range

### PANEL CONNECTION

**Tongue and groove system** in which the special labyrinth profile allows the screw head to be countersunk and fully covered by the next panel – **covered, concealed mounting**. The integrated seals guarantee maximum wind proofing.

The panels interlink precisely with no thermal bridge.

BRUCHA panel FP with PIR/polyurethane core can be combined with BRUCHA panel FP-F with mineral wool core using an adaptor panel.

### TENDER TEXT

download from: [brucha.com](http://brucha.com)

### EXTERNAL MONITORING

National and international tests and quality standards. We will send the certificates on request.



[brucha.com](http://brucha.com)

Contact:  
BRUCHA Corp.  
4949 S Syracuse Street, Suite 550  
CO 80237 Denver  
T: 866.BRUCHA1  
M: [infousa@brucha.com](mailto:infousa@brucha.com)  
[bruchaamerica.com](http://bruchaamerica.com)

