

- DURABLE -
- FOOD SAFE -
- LONG LASTING -
- HIGH QUALITY -
- STATE OF THE ART -
- WIDE RANGE OF ACCESSORIES -

BRUCHA sliding doors for custom solutions.



Panels that Connect



Over 70 years of experience

With over 700 qualified employees worldwide BRUCHA is one of the leading manufacturer of insulated metal panel technology. Over the past 70 years our family-owned business has consistently risen to the growing challenges of modern cold storage construction. With a wide variety of walls, roofs and doors at any size from high-rise warehouses, cold storage to deep-freezers we can adapt to any project requirements.

Doors for production, cold storage and deep freezers

The versatile BRUCHA range of doors includes:

- **HINGED DOORS**
- **SLIDING DOORS**
- **SWING DOORS**
- **STRIP CURTAINS**

Our doors convince through their custom features and craftsmanship, which includes flush fitting windows, security lock options, and their durable finishes!

Continuous product development

We have continuously developed and improved our panels over the past decades to serve the rising demands of the temperature-regulated storage and production hall industry.

Our insulated panels can be set up efficiently and economically and can be used for any application where there is a need for high hygienic standards, whether in new construction or renovations.



All of our products follow international quality standards and are subjected to continuous testing. Certifications are available upon request.



Quality Management
Norm: ISO 9001:2015

PORTFOLIO - What we offer planning, production & assembly:

- Walk-in coolers & freezers: Evolution Box – simple self-assembly*
- PIR+ panels for industrial cold storage construction*
- PIR+ panels for industrial halls construction*
- Fire-protection panels, with mineral fiber for roof, wall and facade*
- Solidboard® FRP panels (FRP = Fiber Glass Reinforced Plastic)
- Test chambers
- Welded floors and walls in stainless steel
- Hinged and sliding doors
- Swing doors and strip curtains
- Special constructions such as CA storerooms, conditioned and climatic rooms, cold smoke and drying rooms, labs and test rooms, flash-freezing rooms
- Clean room constructions*
- High-rise warehouses and rack supported structures
- Customized constructions on request
- Acoustic –WP-A panels*
- PIR+ ECO-Roof panels*
- PIR+ Transparent Roofing Sheets – DP-L panels*

* For further details please request a copy of our detailed folder.



Typesetting and print errors excepted!
PHOTOS: www.korrak.com, Brucha-Stock



TYPES OF FRAMES

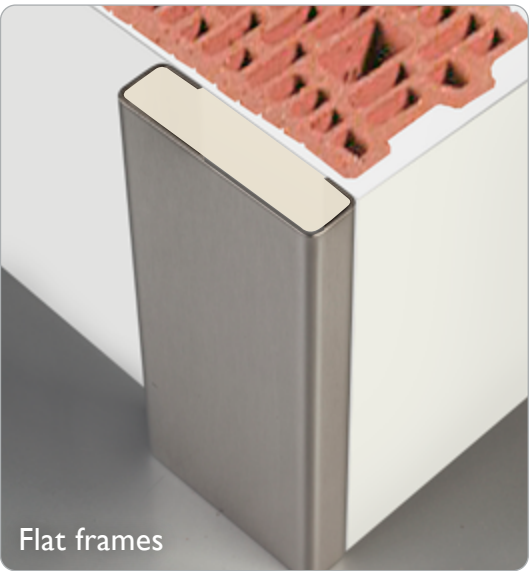
FRAME DETAILS



MASONRY FITTING

STAINLESS STEEL FLAT FRAMES

Broad stainless steel frame in flat design, 1/8 in, for being set and immured into the walls and/or for being mounted onto the walls (without reveal cover).



Flat frames

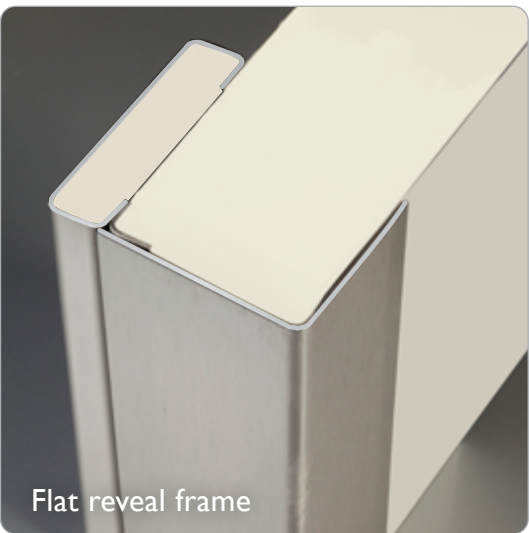
Example photos

PANEL INSERTS

Ready-to-install stainless steel reveal frame for installation into panels, jamb cladding made of stainless steel sheets, corresponding to the panel thickness, covered.

1/8 in - solid construction

The version for flash-freezing rooms is foamed with PU polyurethane hard foam.

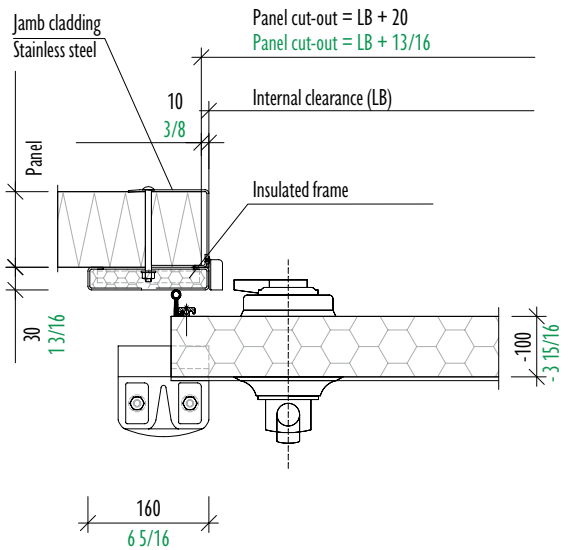


Flat reveal frame

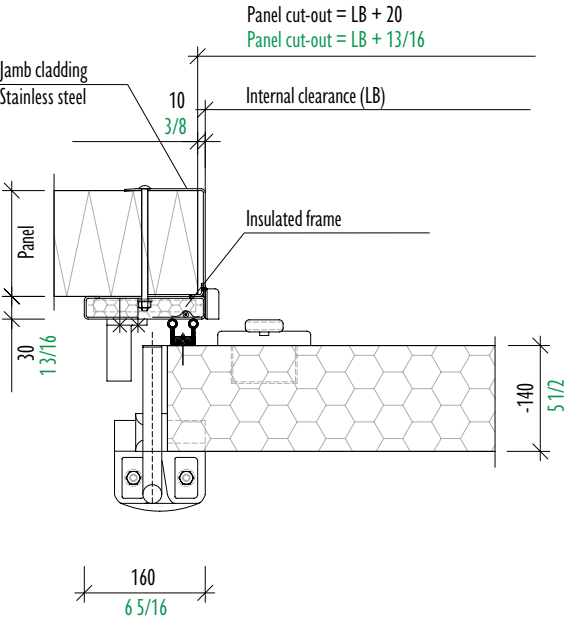
FLAT FRAMES

up to 265 lbs

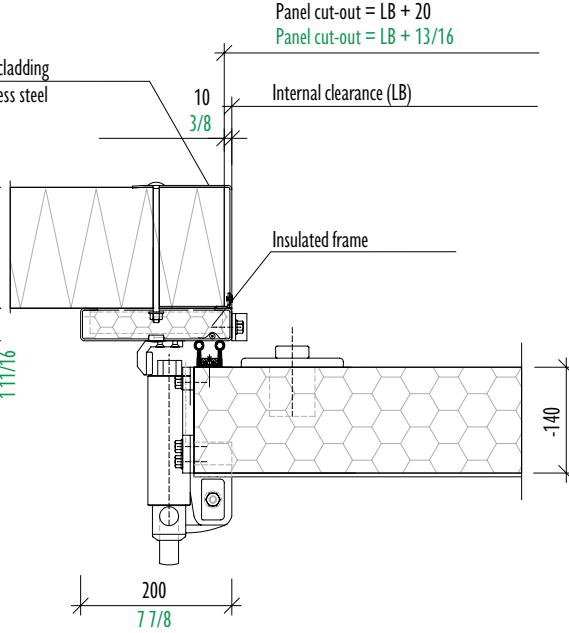
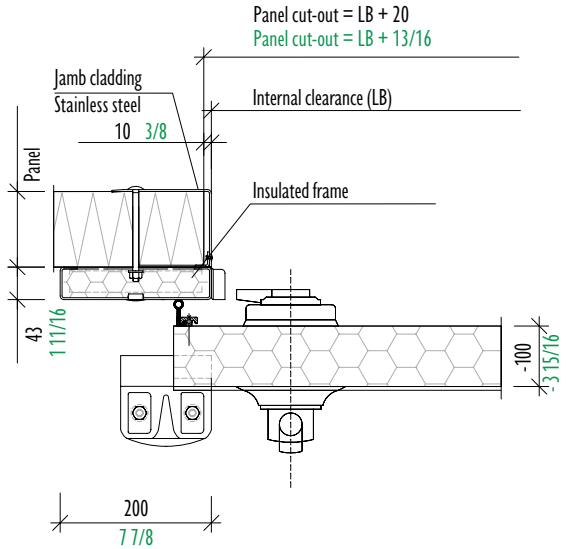
COLD STORAGE – NK-ST



DEEP FROZEN STORAGE – TK-ST



up to 440 lbs



* Imperial measurements [inches] written in black.
Metric measurments [mm] written in green.



APPLICATION	NK-ST	TK-ST	CUSTOMIZATION			FIRE PROTECTION	
	COLD STORAGE	DEEP FROZEN STORAGE	FLASH FREEZING ROOMS	OVERSIZE	BI-PARTING DOORS		
MODEL	Standard*	Standard*	Standard*	880 lbs	440/440 lbs		
LEAF	Injected rigid polyurethane foam Food grade rubber edge seal on 3 sides, sweeping seal to floor						
Leaf thickness	4 in (100 mm)	4 3/4 in - 7 7/8 in (120 - 200 mm)	6 5/16 - 7 7/8 in (160 - 200 mm)	4 - 7 7/8 in (100 - 200 mm)	4 - 5 1/2 in (100 - 140 mm)	5 1/2 in (140 mm)	5 1/2 in (140 mm)
Leaf surface	Galvanized steel sheet, PVC coated or stainless steel, multiple color options available						
R-Value	30	36 - 60	48 - 60	30 - 60	30 - 42	20	20

*Non-standard dimensions available upon request

DOOR DIMENSIONS

max. width ft	10'	10'	10'	22'	16'	8'	8'
max. length ft	14'	14'	14'	16'	9'	8'	8'

SURFACING & FITTINGS

Stainless steel	430I -V2A Standard or V4A Superior, circle matting, strip matting, rolled patterning, brushed grade 220, standard thickness 22 gauge (0.7 mm)
Galvanized steel sheet	As color range BASIC, standard sheet thickness 24 gauge (0.6 mm) furthering surfacing variances on request
Fittings	BRUCHA special fittings for automatic, gasket-friendly sealing by lowering in a closed state

GUIDE RAIL SYSTEM

ALUMINUM up to 265 lbs	•	•					
Stainless steel up to 440 lbs	•	•	•			•	•
bichromated steel profile up to 440 lbs	•	•	•		•	•	•
bichromated steel profile up to 880 lbs				•		•	•





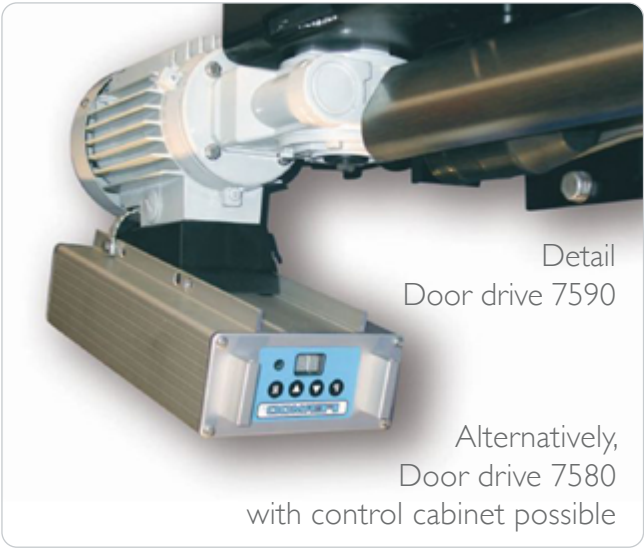
APPLICATION	NK-ST	TK-ST	CUSTOM BUILD			FIRE PROTECTION	
	COLD STORAGE	DEEP FROZEN STORAGE	FLASH FREEZING ROOMS	OVERSIZE	BI-PARTING DOORS		
MODEL	Standard*	Standard*	Standard*	880 lbs	440/440 lbs		

*Non-standard dimensions available upon request

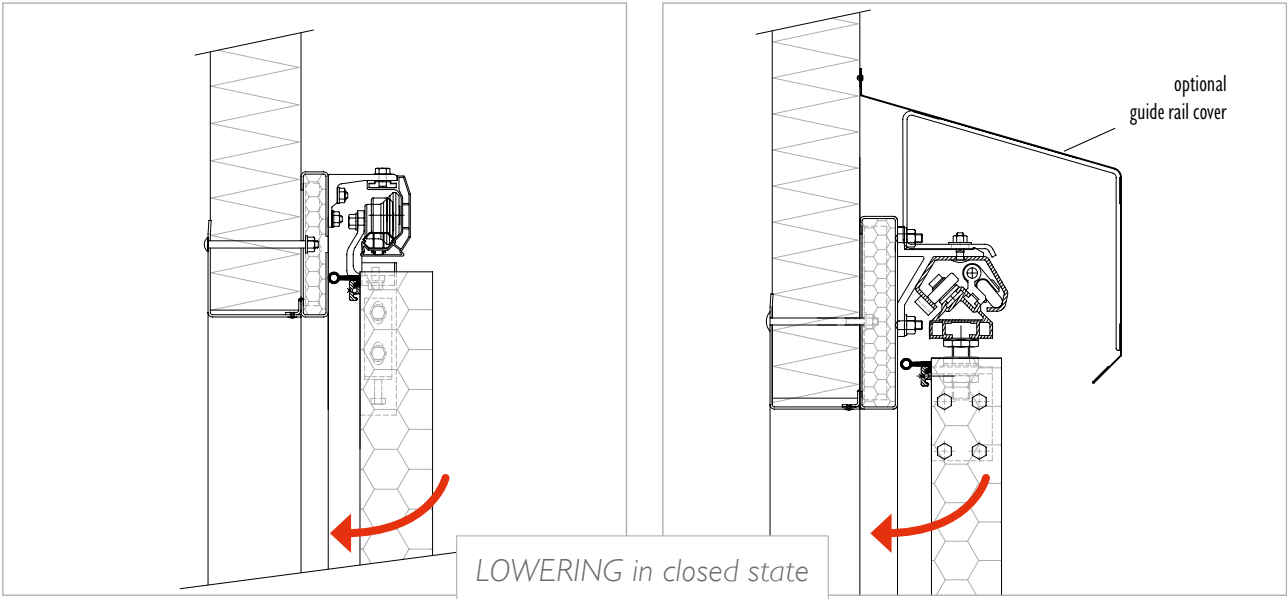
BEAD BREAKER	High-quality version suitable for EVERY field of application													
	exterior	interior	exterior	interior	exterior	interior	exterior	interior	exterior	interior	exterior	interior	exterior	interior
up to 265 lbs	8730	2320	8730	8530	8730	8530	7530	8530	-	-	-	-	-	-
up to 440 lbs	6200		7530	3530	7530	3530	7530	3530	3530DV		6200		7530	3530
up to 880 lbs	4440	4440i	4440	4440i	4440	4440i	4440	4440i	4440	4440i	4440	4440i	4440	4440i

All information comprises non-binding solution proposals, which are to be checked for correctness and applicability in an objective manner depending on the individual case.

E-AUTOMATION



Guide rails featur a gasket saving movement



Bead breaker/grips, exterior und interior





DESIGN VERSIONS

Tubular rail conducts

- with split guide rail
- tubular rail version, central
- tubular rail duct in the door leaf
- Frame and door leaf heating (deep frozen room doors)
- Double-wing doors
- Sliding doors incl. escape door

FIRE PROTECTION

DEEP-FREEZER-SLIDING DOOR incl.

- Stainless steel guide rail cover
- UPS emergency power supply
- Door drive with own control system/control cabinet
- Frost protection system with travel range heating
- Stainless steel skirting protection bollard and bracket



DEEP-FREEZING-ROOM SLIDING DOOR incl.

- Strip curtain
- Contact-less door opener
- Frame heating
- Welded threshold
- Horizontal & vertical light barrier



SLIDING DOOR incl.

- Smoke detector
- Closing button with automatic closing device



Stainless steel SLIDING DOOR

- PVC skirting protection

COMPREHENSIVE SPECIAL ACCESSORIES

- Passage opening push button
- Induction loop
- Radar motion detector for touch-free opening
- Radio remote control
- Lock for cylinder lock with internal emergency opening
- Electrical self-monitoring sensing edge
- Safety edge/crash protection and much more



Stainless steel SLIDING DOORS with separate guide rail and stainless steel bollard

COLD STORAGE SLIDING DOOR with

- covered trailing cable duct
- traffic light signal





SLIDING DOORS



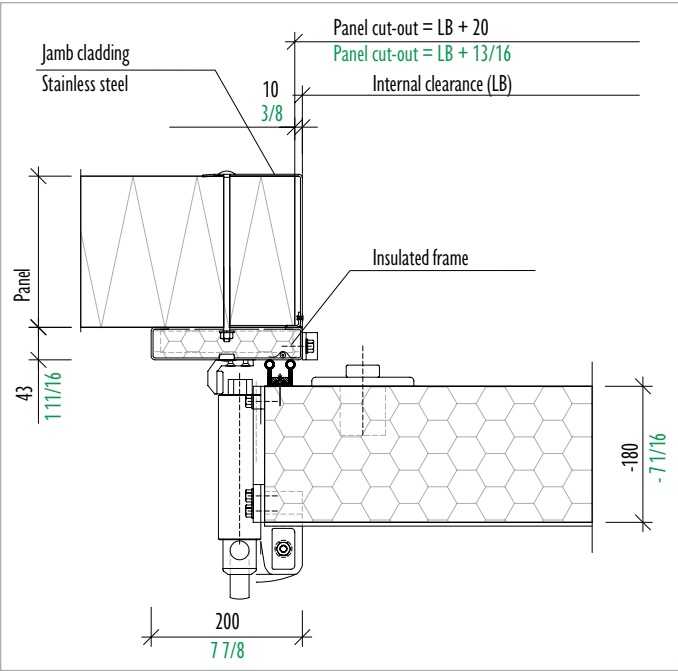
COLD
STORAGE
SLIDING
DOOR
Including lock
control



Custom product LIFT GATES



FLASH-FREEZING SLIDING DOORS up to 440 lbs



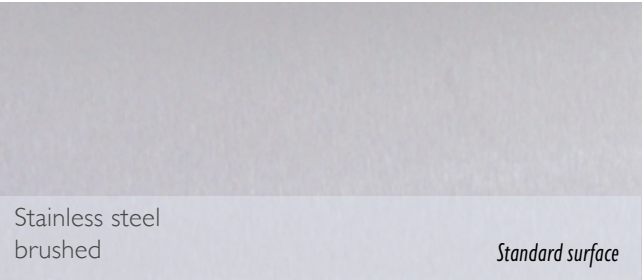
* Imperial measurements [inches] written in black.
Metric measurments [mm] written in green.

COLOR RANGE BASIC **BRUCHA**

SURFACING

STAINLESS STEEL:
430I-V2A Standard or V4A Superior
Standard thickness: 22 gauge (0.7 mm)

Galvanized STEEL SHEET:
plastic coated
Standard thickness: 24 gauge (0.6 mm)



COLOR COLOR GROUP

RAL 9010 Pure White	Standard color	RAL 8004 Copper Brown	
RAL 9002 Grey White	Standard color	RAL 8011 Nut Brown	
RAL 9001 Cream White		RAL 8014 Sepia Brown	
RAL 1015 Light Ivory		RAL 6011 Reseda Green	
RAL 1018 Zinc Yellow		RAL 6005 Moss Green	
RAL 7035 Light Grey		RAL 3000 Fire Red	
RAL 7038 Agate Grey		RAL 3009 Oxide Red	
RAL 9006 White Aluminum		RAL 5010 Gentian Blue	
RAL 9007 Grey Aluminum		RAL 7016 Anthracite Grey	

RAL Color Tones

Please note that the colors listed are only to be interpreted as RAL based.

Due to the use of different coils, color consistency for partial or additional deliveries cannot be guaranteed. We do however ensure, that differences are minimal by using modern multi-angle spectral photometers.

Entire range of RAL and NCS colors available upon request (longer delivery time)

RAL 9006 and 9007:
our high-quality sheet has an increased metallic content.

Please refer to the RAL guidelines.

Original color: color deviations can often appear for touching up work or combinations of differing coating types (e.g. wet painted – powder-coated).

A sample presentation of our sheet is possible at any time upon request.



Panels that Connect



www.brucha.com



BREEAM®



Quality Management
Norm: ISO 9001:2015

BRUCHA Corporation | infousa@brucha.com | (866) Brucha | Denver, CO | Houston, TX